



MONTHLY REPORT (MUFAP's Recommended Format)
Unit Price (31/12/2014): Rs. 10.4929

December 2014

Performance %									
Performance Period	December 2014	FYTD 2015	Rolling 12 Months	FY 2014	FY 2013	FY 2012	FY 2011	FY 2010	Since Launch May 15, 2009*
NAFA Government Securities Liquid Fund	8.0%	8.7%	8.8%	8.1%	8.7%	10.9%	11.5%	10.5%	9.9%
Benchmark	8.9%	9.2%	9.2%	8.6%	8.9%	10.8%	11.4%	10.7%	10.0%

* Annualized Return Based on Morning Star Methodology [Net of management fee & all other expenses]
All other returns are Annualized Simple Return

General Information	
Launch Date:	May 15, 2009
Fund Size:	Rs. 9,575 million
Type:	Open-end – Money Market Fund
Dealing Days:	Daily – Monday to Saturday
Dealing Time:	(Mon - Thr) 9:00 A.M to 5:00 P.M (Friday) 9:00 A.M to 5:30 P.M (Saturday) 9:00 A.M to 1:00 P.M
Settlement:	2-3 business days
Pricing Mechanism:	Forward Pricing
Load:	Front end: 0%, Back end: 0%
Management Fee:	10% of Gross Earnings (Min 1% p.a., Max 1.25% p.a. of Average Annual Net Assets)
Risk Profile:	Exceptionally Low
Fund Stability Rating:	"AAA (f)" by PACRA
Listing:	Lahore Stock Exchange
Custodian & Trustee:	Central Depository Company (CDC)
Auditors:	KPMG Taseer Hadi & Co. Chartered Accountants
Benchmark:	70% 3-Month T-Bills & 30% average 3-Month deposit rates (AA & above rated banks)
Fund Manager:	Muhammad Ali Bhabha, CFA, FRM
Minimum Subscription:	Growth Unit: Rs. 10,000/- Income Unit: Rs. 100,000/-
Asset Manager Rating:	AM2 by PACRA (Very High Investment Management Standards)

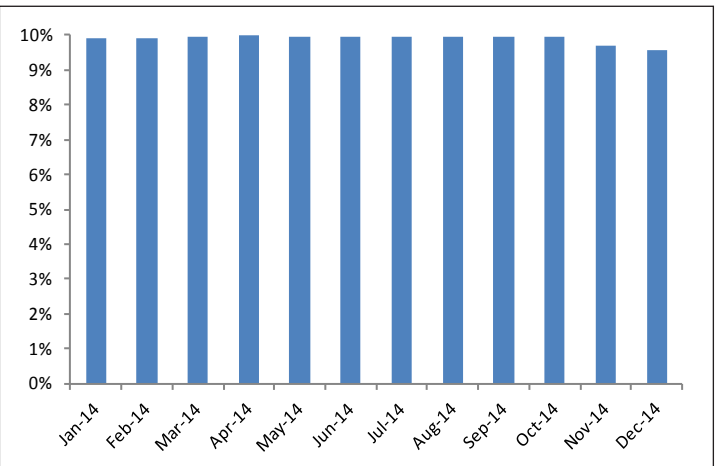
Investment Objective
To generate optimal return with minimum risk, to provide easy liquidity and reasonable income to its unit holders by investing primarily in short-term Government Securities.

Fund Manager Commentary
The Fund earned an annualized return of 8.0% during December 2014 versus the Benchmark return of 8.9%. The annualized return for CY14 is 8.8% against the Benchmark return of 9.2%. The return generated by the Fund is net of management fees and all other expenses.

NGSLF's stability rating is 'AAA (f)' awarded by PACRA. NGSLF is the largest Fund in Pakistan with this rating. The rating reflects exceptionally strong credit and liquidity profile of the Fund. Average daily allocation for the last 365 days in short-term T-Bills was around 77.0% of the Fund size. While at the end of the month, T-Bills comprised around 42% of the Total Assets and 42% of Net Assets. Weighted average time to maturity of the Fund is 33 days.

We are monitoring the capital market expectations and will rebalance the portfolio accordingly.

Monthly average yield of 3-month T-Bills for the last 12 months



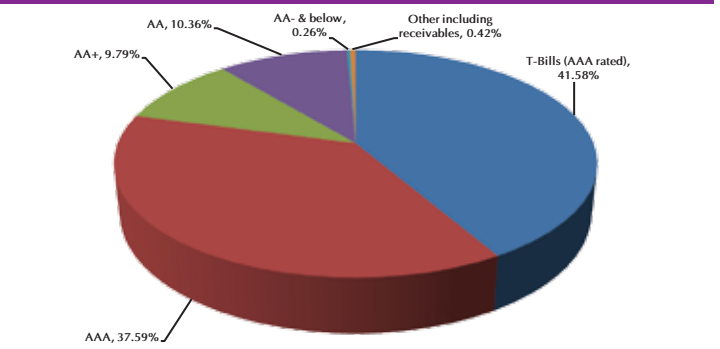
Asset Allocation (% of Total Assets)	31-Dec-14	29-Nov-14
T-Bills	41.58%	80.09%
Placements with Banks	8.19%	5.16%
Placements with DFIs	9.72%	10.64%
Cash Equivalents	40.09%	3.73%
Other including receivables	0.42%	0.38%
Total	100.00%	100.00%
Leverage	Nil	Nil

WORKERS' WELFARE FUND (WWF)
The scheme has maintained provisions against Workers' Welfare Fund's liability to the tune of Rs. 115,903,393/-. If the same were not made the NAV per unit/ last one year return of scheme would be higher by Rs. 0.1270/1.32%. For details investors are advised to read note 7 of the Financial Statements of the Scheme for the quarter ended September 30, 2014.

Name of the Members of Investment Committee
Dr. Amjad Waheed, CFA
Sajjad Anwar, CFA
Muhammad Ali Bhabha, CFA, FRM
Syed Suleman Akhtar, CFA

Notes: 1) The calculation of performance does not include cost of front end load.
2) Taxes apply. Further, tax credit also available as per section 62 of Income Tax Ordinance.

Credit Quality of the Portfolio as of December 31, 2014 (% of Total Assets)



Disclaimer: This publication is for informational purposes only and nothing herein should be construed as a solicitation, recommendation or an offer to buy or sell any fund. All investments in mutual funds are subject to market risks. The NAV based prices of units and any dividends/returns thereon are dependent on forces and factors affecting the capital markets. These may go up or down based on market conditions. Past performance is not necessarily indicative of future results. Please read the Offering Document to understand investment policies and the risk involved.